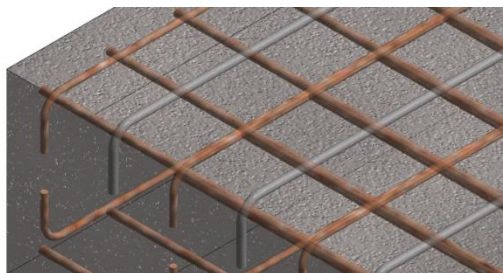
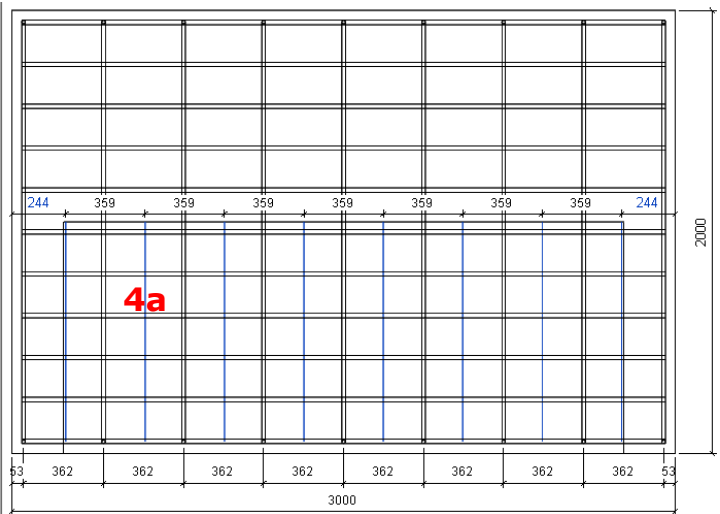
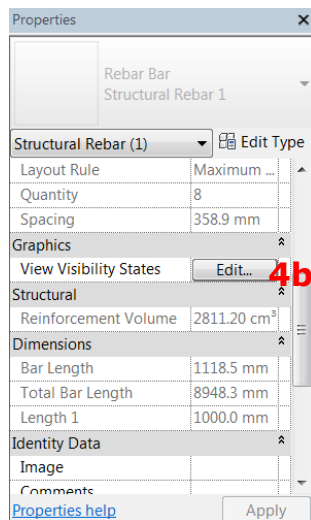
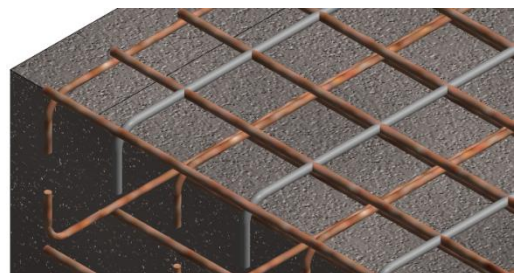


ICDAS Revit Building Interface Manual

2019.00



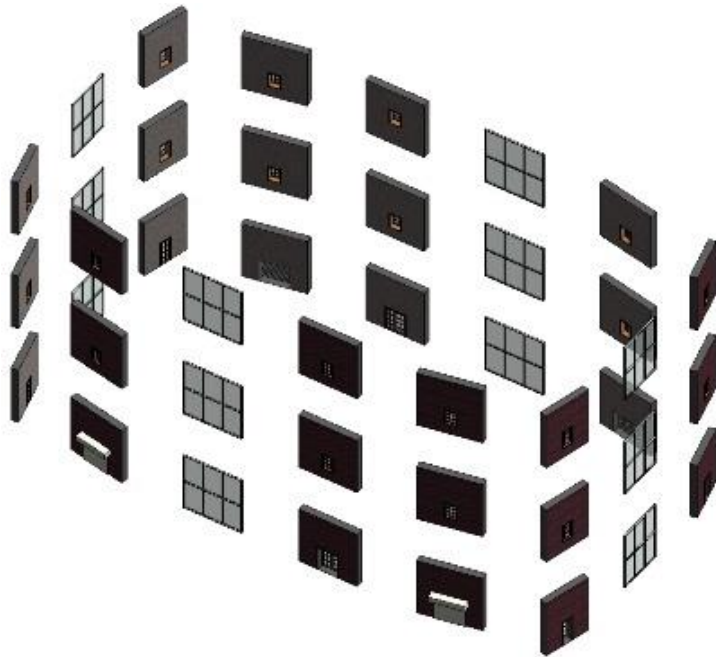
3D View Transparency 20



3D View Transparency 0



2018
2017
2016
2015
2014
2013



Parametric Buildings

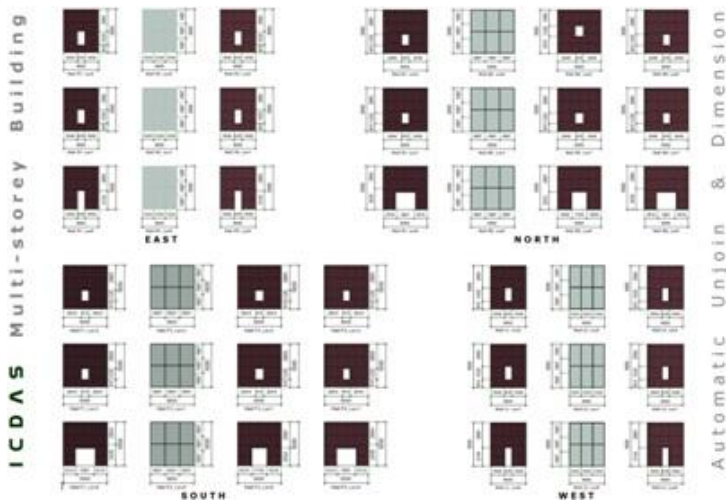
[User's Manual](#)

[Revit Building Interface](#)

[Family](#)

[Dynamo](#)

[Material](#)




Overview

Welcome to Revit Building Interface Manual.

This manual has been created during creation of buildings model in our website.

Revit is a design and documentation platform that supports the design, drawings, and schedules required for building information modelling (BIM). BIM delivers information about project design, scope, quantities, and phases when you need it.


This manual covers the most applicable tools in ribbon in Revit tabs. The topics in PDF  bookmark links (Table of Contents) are arranged in an order that we experience easily to find when working with Revit models. This manual is a short part of the large online Help from Revit and contains many details which are not provide from Revit online Help. E.g. comparison over 31 family folders in Architectural and Construction Template, list of additional family folders/files added in ICDAS D2019.rvt file, link of View Elevations in Floor Plans to Elevations View and many other practical issues.



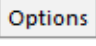
The manual is for you, who have experiences in 3D geometry but do not often work with Revit. It is also for you who have skills in Revit but also wish to know better location and structure of family files and system family in Revit, e.g. regarding edit family files in family file in project file in Revit.









The manual refers to both architectural model components such as door, window... and structural elements such as analytical model, reinforcement... in Revit. The manual outlines also the workflow between Revit, FEM and landscape model in Chapter Export. We call the manual also for "Revit Interface Manual" when we work manually from the automatic model creation. The authors have more than 17 years' experiences in design and analysis of constructions. The manual is updating during subscription of ICDAS FRBL, not only for the Revit tools but also the construction cases we face.

ICDAS.

Contents

Overview	3
Contents	4
User interface & Revit Fundamentals.....	8
Elements for Revit	8
Part of the user interface	9
Application Menu	10
Annotate	11
Tag > Room Tag.....	11
Tag > Tag Category > Multi-Rebar.....	11
Text > A Text on sheet.....	12
Architecture tab.....	13
Create Beams Columns and Braces on nlevels	13
Place a bed using Component in Architecture tab.....	14
Place a Table from check list of all tables *.rfa files.....	15
Create a Kitchen using multi components	17
Revit  > Export	19
DXF Export to Lusas.....	19
Revit DXF Export Units Meter	19
Lusas import merged points	20
Export selected Revit elements to 3ds Max Design (FBX)	22
Family edit.....	25
Family file in family file.....	25
Family in family in Project file.....	27
Insert components as bed, table, plan.....	28
Load Family in Project Browser (Families folder in Project Browser)	29
Load Family in Existing Model (Family Editor).....	30
Load Facade.rfa into Building.rvt	32
Load Australia Family Window, Edit Material ICDAS White.....	34
Initialize Wall Door Window	36
ICDAS 2017* .rvt View Elevations	37
Architectural and Construction template	37
Move View Elevations in Floor Plans for ICDAS 2017.00.rvt.....	39

Levels	41
Level Text Size in Family file	41
Drag Level wider in Family file.....	43
Create Level in Family file	44
Add Level before run Macro.....	45
LINK	48
Auto – Origin to Origin	48
Levels & Reload	49
Rotate & Move from Project Base Point.....	50
LINK *.RVT in *.RVT	52
1. Detect a linked *.rvt and its Path	52
2. Linked *.rvt files in a project folder... ..	53
3. The upgrade changes are not saved to the linked model	54
4. Open Revit linked model in a second Revit session... ..	54
5. Turn off levels of the Revit linked model.....	55
Manage tab.....	57
Create first Macro in Revit (Visual Studio C#).....	57
Running Macro C# in Revit (GenericModelCreation).....	67
Project Units (Settings tab)	69
Material	70
1. Create New Material	71
2. Bump, Texture Scale and Views Visibility	75
3. Material Texture Scale	76
Realistic Materials in Revit: Enscape™ Tutorial	80
Changed material in Family updated in Project file	81
Modify	83
Paint 	84
Rooms.....	85
Rotate.....	87
Move.....	89
Un-joining elements	91
Revit  > 	95
File Locations	95
Project Browser	97
Construction Documents.....	97
Manage > Project Information	99
Select Sheet > Properties	100

Print Range and Settings	103
Family Folders in Revit start page	106
Family Templates.rft	106
Family File.rfa	106
Family libraries in C:\ProgramData\Autodesk	107
Project Base Point & Survey Point	116
Cannot see Project Base Point & Survey Point?	116
Move the PBP	116
Move the PBP only  	117
Move the PBP & the model  	117
Coordinate Origin at the SVP or the PBP	118
Move the SVP	118
Move the SVP only  	118
Move the SVP & repositioning shared coordinated  	119
Properties Palette	120
Curtain wall / Mullion joints.....	120
Door Position & Properties	124
Linear Dimension Style > Edit Type	125
Reinforcement 2017 incl. Material.....	127
Structural Area Reinforcement.....	127
Valid Reinforcement Hosts	127
Construction Template without Reinforcement Family	127
Foundation Slab example.....	127
Structural Area Reinforcement Symbols family & Tags family (No)	129
Define Major Direction for Area Reinforcement.....	129
Rebar Element View Visibility States & 3D View	131
Rebar Cover Settings.....	132
Rebar Diameter, Length & Volume	133
Material Rust Rebar.....	135
Major bar place outmost	136
Rebar Hook Type & Length.....	137
Structural Path Reinforcement.....	138
Path Reinforcement as supplementary rebar	138
Additional Offset.....	140
Section Box	141
Site Designer Revit 2017.....	145
What we learn?	145
Files location	145
Sun Settings	155

VIEW ICDAS MODEL IN EXISTING MODEL.....	158
View Control Bar	161
Analytical Model Visibility	161
Visibility/Graphic Overrides	161
Check a wall is structural or not?	163
Manage > Object Styles (Global Setting)	164
Structural Settings (Global Setting).....	165
Hide in View & Unhide in View	166
View Lighting in Graphical Display Options	167
View Elevation	168
Elevation Mark	168
Modify View Elevations in Floor Plans	169
View tab	171
Navigation Bar	171
View Scale	171
Properties & Project Browser	172
Render Setting	174
Sun Azimuth & Altitude	174
Azimuth & Altitude on 10 floors building	175
Artificial Light	176
Exposure Control (Also after rendering)	178
Vertical Section	180
Create Lines in Section View	181
Create Schedule	182
Switch Windows & Close Hidden	183
Visibility/Graphic Overrides for Filters.....	184
Work Plane & Create Reference Plane.....	185

Please register a subscription for the full contents of manual.